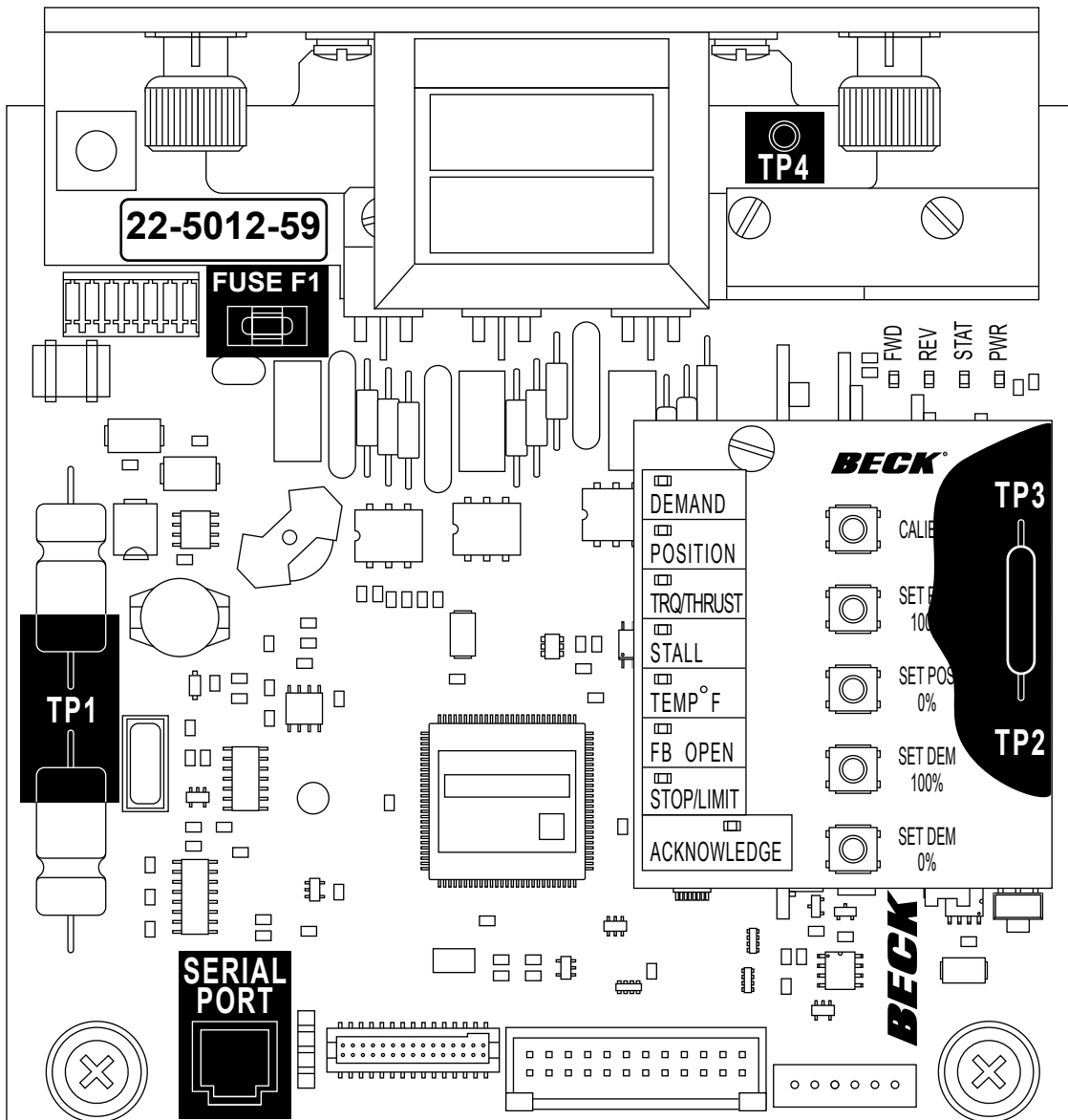




DCM-2 TEST POINTS



The DCM-2 provides voltage test points allowing the verification of the demand signal and position signal at the DCM-2 board.

	Test Points	Voltage
Demand Signal	TP2 (+) and TP3 (-)	1 - 5 Volts DC
Position Signal	TP4 (+) and TP1 (-)	1 - 5 Volts DC

The Fuse F1 (Beck part number 11-1373-01) is a 7 Amp very fast acting 125 Volts AC subminiature surface mount fuse installed in a fuse holder.

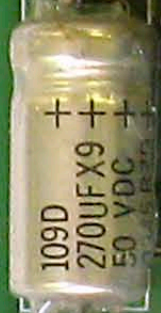
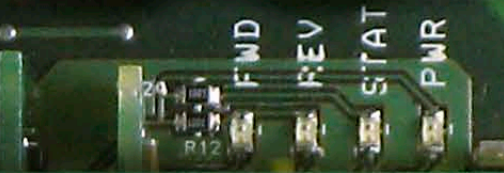
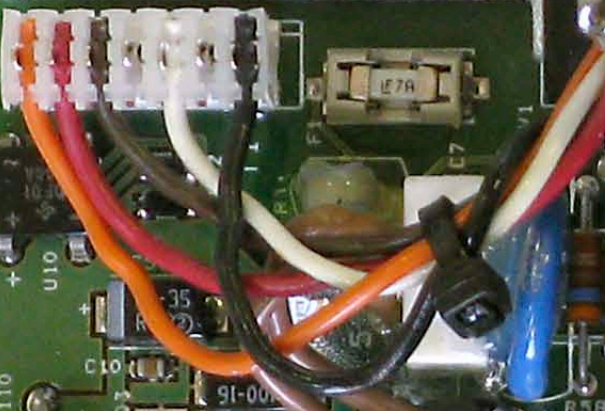
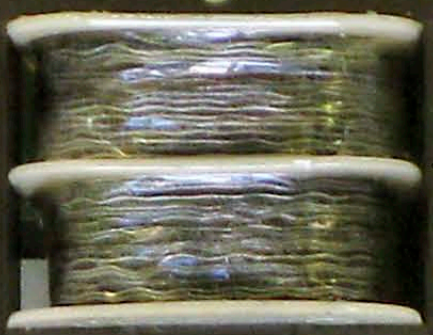
1.000
200°F
93°C

22-5012-59

RT2

P1

TP4



BECK

DEMAND	CALIBRATE
POSITION	SET POS 100%
TORQUE	SET POS 0%
STALL	SET DEM 100%
TEMP °F	SET DEM 0%
FB OPEN	
STOP/LIMIT	
ACKNOWLEDGE	

REMOVE ALL JUMPERS

BECK

TORQ